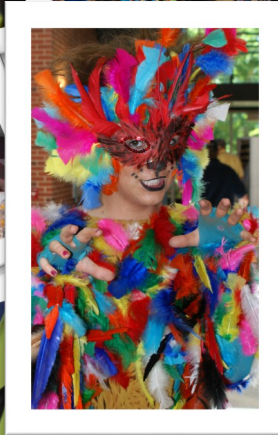




ODYSSEY OF THE MIND WORLD FINALS

COACHES' PACKET
MAY 23-26, 2018



IOWA STATE
UNIVERSITY™



Table of Contents

2	WELCOME
3-4	CYTES OF AMES
5	TRANSPORTATION
6	GENERAL INFORMATION
8-9	ACCOMMODATIONS
10	SAFETY
11	PARKING
12-13	RECREATION
14	CONTACT INFORMATION
15-16	HEALTH
17-18	SHIPPING
19	CHECKLIST





Welcome

Dear Coach,

Congratulations to you and your team for advancing to the 2018 World Finals-what an exciting time! While you are busy preparing for your trip to Iowa, our team is thoughtfully making preparations for your arrival. Please take a few moments to review this guide to Ames and ISU. We have included a few must-know tips for your stay, including information about all the fun you can have when you are not competing. Best of luck to you and your team—we look forward to seeing you in May!

Sincerely,

Handwritten signature of Julie Weeks in black ink.

Julie Weeks, Executive Director
Ames CVB/CPM
515.232.4032
www.visitames.com

Handwritten signature of Julie Kieffer in black ink.

Julie Kieffer, Campus Event Manager
ISU Conference Planning and Management
515.956.3200
www.cpm.iastate.edu

AMES, IOWA

Located in the heart of the Midwest and Iowa, Ames is the source for tradition, discovery, diversity and of course, Iowa State University and the Cyclones. Located just 40 minutes south of Ames, the Des Moines International Airport is served by several commercial airlines. Ames offers downtown boutiques, 33 woodland parks and 55 miles of bike and pedestrian trails.

IOWA STATE UNIVERSITY

ISU was the nation's first land grant college and has since established itself as a world leader in such diverse disciplines as engineering, veterinary medicine, and agriculture. With over 36,000 students from more than 115 different nations, Iowa State offers cultural diversity and brings distinct international flavor to the Midwest.



CYtes

OF AMES AND IOWA STATE UNIVERSITY.



Ames, Iowa...#1 of College Cities and Towns in America...#1 Best Town in Iowa...#7 of the Happiest Small Places in America...#5 of the Most Beautiful College Campuses in the World...where else would you want to be? Nowhere. Because Ames IS an exCYting place to be! After you arrive and you are in-between competitions and your pins are all traded, what should you do? Check out these *CYtes of Ames!*

WIND, WAVES & LIGHT EXHIBIT

Reiman Garden's exhibit, Wind, Waves and Light by George Sherwood, will feature 11 sculptures designed to explore space, time, and the dynamic relationship of objects in motion. The choreography of each piece is governed by a set of basic movements, facilitated by an arrangement of aerodynamic surfaces connected by rotational points. The sculptures are made of stainless steel, and the reflective qualities integrate each sculpture into its environment. Wind speed and direction, shades of light, time of day, precipitation, and seasonal color transform the qualities of light and movement of the sculptures. For more information visit www.reimangardens.com/exhibition.

FIND CY

Go on the hunt for Iowa State University's and Ames' favorite mascot, CY! Locate the CY that wears a suit of mirrors in downtown Ames...find the "What I Love about ISU" CY at Reiman Gardens...and just where is the "CY the Dentist Guy" statue with the giant toothbrush? CyclONE City was founded as a "tour" of life sized CY statues placed throughout the Ames community to raise funds for local charities and ISU scholarship. 29 themed CY statues can be found around town. For more information visit www.cyclonecityames.com.

AN ARTFULL CAMPUS

University Museums: Iowa State University is home to the largest campus public art program in the United States with over 2,000 major public works of art. Visit the Christian Petersen Art Museum, Farm House Museum, Art on Campus Collection and Elizabeth and Byron Anderson Sculpture Garden located all across the campus. For more information visit www.museums.iastate.edu.





DO DOWNTOWN

With more than 50 locally owned specialty retail shops and restaurants, the Main Street Cultural District is the perfect destination to enjoy strolling along the beautiful sidewalks, visiting with the friendly shop owners and grabbing a bite to eat at any of the local restaurants. The Octagon Center for the Arts, providing gallery exhibits, art classes for children and adults and an art shop featuring Iowa artists. Enjoy a hands-on card making activity and take a guided exhibition tour to learn more about the art and artists represented in the current gallery exhibit. For more information visit www.downtownames.org

CAMPING OUT IN CAMPUSTOWN

Ames' Campustown district has a fun and unique atmosphere for diverse dining and shopping. Try the Pizza Pit pizza, a college student's dietary staple. Grab a Starbuck's coffee and pair it with an Arcadia Cookie or sample a few of the food vendors along Welch Ave during the evening. Find your ISU and Cyclone souvenirs at Dogtown University or Campustown Spirit. You are sure to get the full collegiate experience no matter where you go. For more information visit www.amescampustown.com.

NEED SUPPLIES?

For a quick prop freshen up, here are just a few of the convenient options available to get just what you need!

- University Bookstore, 515.294.5684, Iowa State Memorial Union
- Hobby Lobby, 515.232.3500, 620 Lincoln Way
- HyVee Drugstore, 515.233.9855, 500 Main Street
- Lowe's Home Center, 515.233.0404, 120 Airport Road
- Target, 515.663.9500, 320 South Duff Avenue
- Wal-Mart, 515.441.8131, 3015 Grand Avenue or 534 South Duff Avenue, 515.956.3536
- Sam's Club, 515.233.9750, 305 Airport Road
- Union Copy Center, 515.294.0008, Room 0303 Memorial Union



Ames is a *smart* choice to visit. Check out all there is to do at www.cytesofames.com or call us at 515.232.4032.



Getting Here

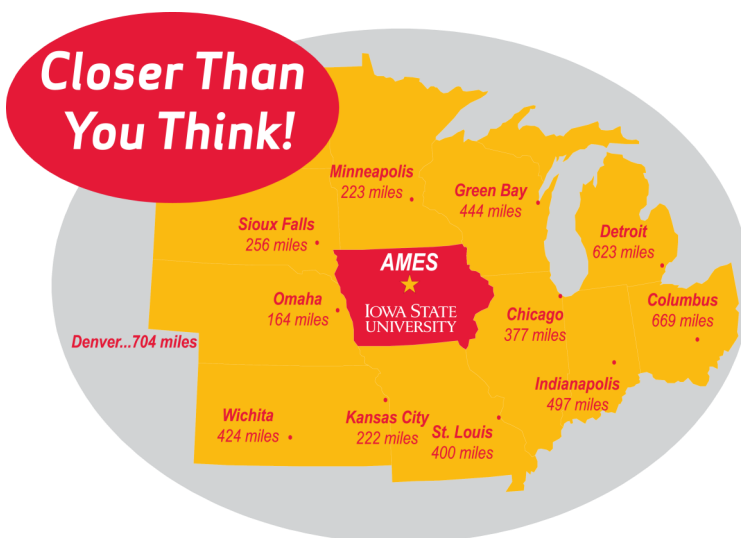
GROUND

Ames is a great driving destination, located just 25 north of Des Moines, Iowa and the intersection of I-30 and I-80, it is within a day’s drive for many of your teams. When planning your travel, please allow for the following drive times: based on the distances provided.

AIR

Ames is served by two major airports in Iowa. Des Moines International Airport (DSM), Des Moines, IA has more than 100 arrivals and departures daily, serving over two million passengers annually. Eastern Iowa Airport (CID), Cedar Rapids, IA, serving over one million passengers annually. Direct flights to/from major U.S. Cities are offered by the following airlines:

Allegiant Air	American Airlines
Delta	Frontier
Southwest (DSM only)	United Airlines



AIRPORT SHUTTLES

Shuttle service is available for Odyssey teams from both the Des Moines, IA (DSM) and the Eastern Iowa Airport Cedar Rapids, IA(CID). The shuttle will run between the airport and registration site at the Iowa State Center. Shuttles will be scheduled to accommodate Odyssey group arrivals and are not available at regular intervals or to other destinations. Delayed flights will be accommodated as quickly as possible. Service is available Monday, May 21st through Sunday, May 27th. To make your shuttle reservation, visit: www.ThinkAmes.com/worldfinals2018.

INTERNATIONAL FLIGHTS

For International or Domestic flights from Chicago O’Hare (ORD) or the Minneapolis-St. Paul International Airport (MSP) charter service can be arranged through the two Central Iowa based Motor Coach companies listed below. Please mention Odyssey of the Mind World Finals when inquiring about reservations.

- CIT Signature Transportation
Phone: 515.233.0286 or 877.866.3687
- Windstar Lines
Phone: 515.262.2544 or 888.494.6378

For more information regarding shuttle options, visit www.ThinkAmes.com/worldfinals2018, email info@amescvb.com or call 515.232.4032. For more information regarding this shuttle option visit: www.ThinkAmes.com/worldfinals2018





General Information

DIRECTIONS TO STEPHENS AUDITORIUM

All coaches must register their teams at the Iowa State Center Stephens Auditorium. From I-35, exit west on Highway 30 (exit #111B). Traveling west on Highway 30, exit north onto University Blvd. Traveling north on University Blvd, turn west (left) on South 4th Street. Turn north (right) into the Iowa State Center parking lots. Maps are included on the following page for your reference.

REGISTRATION

Only coaches will be allowed on the second floor of Stephens Auditorium to register. Coaches will receive your team's housing assignment information, meal wristbands, program materials and directions to your residence hall/apartment check-in site where you will receive keys to your rooms. Odyssey of the Mind souvenir items will be available on the first floor of Stephens. Local information and restrooms are available on the first floor.

LATE ARRIVALS

For those arriving after registration hours on Tuesday or Wednesday, please stop at the ground floor of Stephens Auditorium, located in the Iowa State Center Complex. Staff will direct you to the appropriate location to check in. *For those arriving for registration on Thursday, please go to the Information Desk in the Memorial Union.* Registration materials will be available there for pickup.

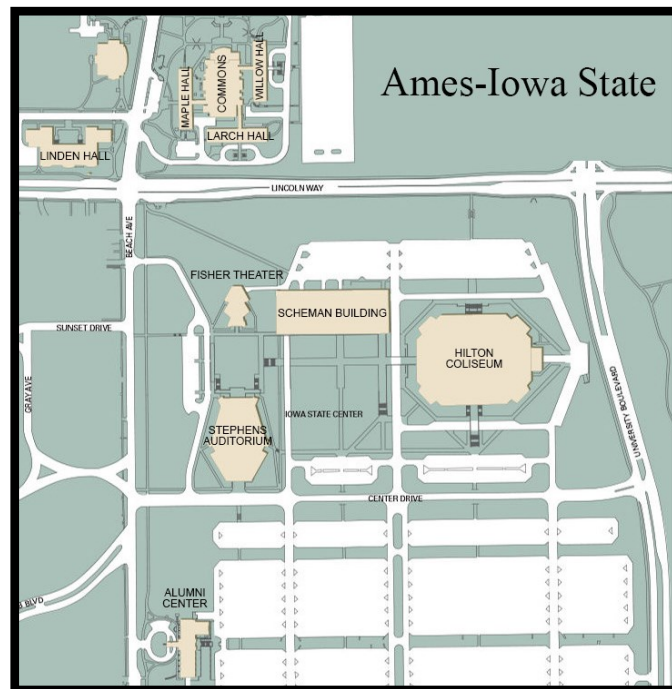
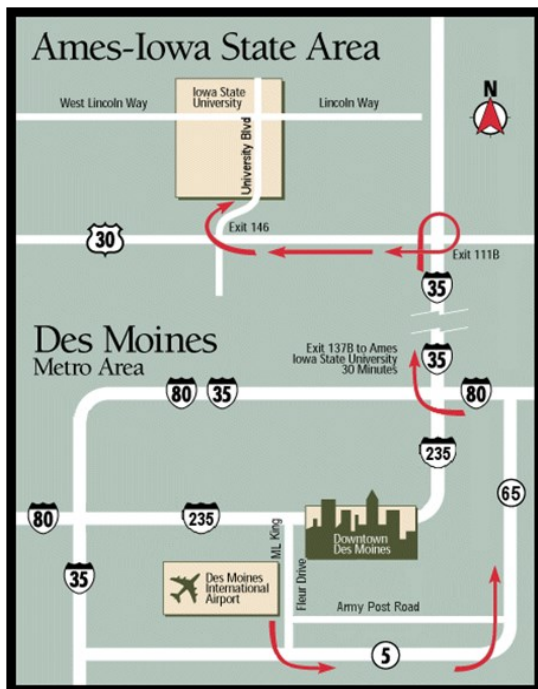
OTHER

Iowa State University or Creative Competitions, Inc. shall assume no responsibility for theft, destruction or loss of money, valuables, or other personal property belonging to Odyssey of the Mind participants, for any reason. Please inform your team members to keep their room doors locked at all times and to not leave valuables in public areas. Food service and sales on campus can only be provided by Iowa State University.





Maps





Housing

Ames and Iowa State are committed to making a great experience for you while you are in our community. As a large campus, we offer a variety of housing options for World Finals teams. Most teams will be housed in traditional style residence hall housing (the majority in double-occupancy rooms), with additional placements in triples, apartment style housing (with kitchenettes equipped with microwaves and stoves/no utensils), and off campus housing in nearby hotels. When completing the Lodging/Meals Reservations, please indicate **only medically-required housing and dining needs that may affect placement**. Enjoy your adventure at World Finals!

CAMPUS HOUSING

Most residence rooms are double occupancy rooms; however, there are a few single and triple occupancy rooms. The majority of housing areas have group bathrooms (shared by a floor) located nearby the sleeping rooms. Few have suite-style sleeping rooms with several rooms (up to four people) sharing a bathroom. Beds are single (twin) beds, most of which will be lofted over room furniture, and a few futon-style beds. Air-conditioned rooms are **not** guaranteed. Please plan accordingly when making your housing plans.

Your team will be pre-assigned rooms in residence housing on campus. In order to accommodate all teams it will be necessary to assign one person to every available bed. This means that if a team has 9 persons assigned to rooms with a total of 10 beds, there may be a person from another team of the same gender and similar age assigned to the remaining space. Males and females may be assigned within the same residence hall room if requested. Males and females may be assigned within the same suite or apartment, but not within the same sleeping room unless requested. Please inform team members of this possibility. Each person will be provided with a pillow, pillowcase, sheets, blanket, 2 towels, 1 washcloth & soap. Daily towel exchanges will be available at a centralized location. Laundry facilities will be available within the residence area.

SPECIAL HOUSING

If you have a team member with a **medically-required** special housing assignment need (e.g., “uses wheelchair/quadruplegic and must have wheelchair accessible room & bathroom” or “has broken leg and using crutches/cannot manage a lofted bed/needs minimal stairs”), list the member’s full name, contact telephone number, email address and description of requirement when you submit your Lodging/Meals Reservation.

LOST KEYS

Be sure to keep track of your keys! At check in, you will receive an envelope with all your keys, use this as a handy resource to gather them all to turn in at check out. Keys must be returned at check-out; charges will be assessed for unreturned keys (up to \$175). If lost keys are found, turn them in to one of the 24- hour residence hall desks or to the Odyssey information desk.

OFF CAMPUS HOUSING

Some teams may be assigned to off campus housing. These locations will have regular shuttles to campus and to all World Finals event sites. All teams housed off-campus by the university will be provided breakfast and dinner in their residence, and lunches will be provided in a designated site on campus.

24-HOUR ASSISTANCE

A 24-Hour Conference Desk will be located in each residence area. Guests who have questions about housing or dining should feel free to call or stop by their Conference Desk. The 24-Hour Desks can store medications requiring refrigeration (refrigerators are not supplied in all residence rooms). Bring medications in small, well-labeled containers.





Dining

DINING

You will be assigned to a specific dining center for your meals. All persons who have purchased Odyssey of the Mind meal packages will be issued a color-coded wristband allowing them into the appropriate dining center. Meals typically include a selection of entrees, hot and cold side dishes, salad bar, fresh fruits and vegetables, and a variety of desserts and beverages. ISU Dining may choose to substitute some meals as pick-up-and-go meals when appropriate (notices to be shared at arrival). Individual guest meals can be purchased at the entrance of the dining center on a cash-only basis.

Convenience stores are located within the residence facilities and on the ISU campus. They carry a wide variety of beverages, snacks, ISU souvenirs, cards for residence hall washers and dryers, laundry supplies and personal care items.

SPECIAL DIETARY NEEDS

Most of our Dining centers are able to accommodate individuals with these allergens: dairy, egg, fish, shellfish, wheat, peanuts, tree nuts, and soy. When Registering, if anyone in your group has dietary allergies, please list the member's full name, contact telephone number, email address and list the allergens (see above list) for the **medically-required** dietary needs on the Lodging & Meals reservation. If you are requesting Halal or Kosher diets, please complete the form using the same process as above. Those who are unable to self-manage their dietary allergies, such as celiac disease, will be assigned to a specific dining area.

Many other dietary needs or preferences (such as for those who have diabetes; are vegetarians, etc.) can be accommodated simply by choosing appropriately from the wide variety of choices that will be available at each meal. These types of needs should **not** be listed on the Lodging and Meals reservation.

Please note, ingredients used in our recipes may be produced in a facility that may contain common food allergens such as, but not limited to: dairy, egg, fish, shellfish, wheat, peanuts, tree nuts, and soy. Food served in our facilities may not be allergen free even if they are initially made with products that don't contain the allergen.

OFF CAMPUS DINING

In addition to the meals offered as part of your package, Ames offers a variety of dining options in the community. If your plans include dining off-campus, visit www.ThinkAmes.com for more information on dining options.





Rules, Safety and Courtesy Reminders

DEPARTMENT OF RESIDENCE AND ISU DINING RULES, SAFETY AND COURTESY REMINDERS

- Smoking is prohibited on all university grounds, including parking lots and in all university-owned or operated buildings, residence halls and apartments.
- Alcoholic beverages are not allowed in any Department of Residence buildings and ISU Dining facilities.
- Water guns, ball playing, etc., are not allowed indoors.
- Firearms, weapons, ammunition, fireworks, explosives and highly flammable materials are not allowed.
- Tampering with elevators, fire alarms, and other building property is prohibited. Complete evacuation of the building is required in the event of a fire alarm.
- For safety reasons, window screens may not be removed. A charge of \$50 will be assessed to occupant for removal.
- Guests must present their wristbands at all meals served within the ISU Dining facilities. Food and beverages may not be carried out of the dining rooms (for example, no filling of water bottles, coolers and mugs). Shirts and shoes are required in the dining center; swimwear and sleepwear are not acceptable attire.
- Guests shall not engage in conduct which is disruptive to other guests or University programs. Chaperones are responsible for the conduct of minors at all times.
- Quiet hours are from 11:00 p.m. to 8:00 a.m. Noise that can be heard outside of a closed door may be considered too loud for your neighbors at any time.
- Participants are not allowed in Department of Residence areas which are not assigned to their group unless accompanied by a responsible host registered for that area.
- Always lock your door and take your keys even if you leave for “just a minute”.
- Never leave suitcases/belongings unattended and make sure your belongings are clearly marked.



FOR ASSISTANCE, A 24-HOUR CONFERENCE DESK WILL
BE LOCATED IN EACH RESIDENCE AREA.



Parking

RESIDENCE AREA PARKING

Teams living in residence housing on campus will be able to park in assigned areas within easy walking distance of their living area. A limited number of parking passes will be available for purchase at registration.

GENERAL PARKING

Those not staying in residence housing on campus should park at the Iowa State Center south of the main campus. There is no charge for parking in this area and a free shuttle is provided to central campus. Additional parking adjacent to central campus is available at the Memorial Union parking ramp with an hourly charge. Normal restrictions apply to fire lanes, spaces marked “handicapped parking,” and spaces reserved for service vehicles. Other university lots are assigned to university staff. Please take care to avoid restricted areas.

CHARTER COACHES

If your team is chartering a coach to bring you to Ames, please make the following arrangements with your driver. When on campus, the charter should park in the general lots south of the Iowa State Center. At registration, pick up information on permitted pick up/drop off locations on campus. Parking is not allowed for buses on central campus, and waiting times are limited. Be sure to exchange cell phone numbers with your driver in case either your driver or the team need to make arrangements for an alternate meeting place.

CYRIDE

CyRide, the city’s public transit system, will operate a free bus service throughout the competition connecting the residence areas, central campus and the Iowa State Center. CyRide also will offer free rides throughout Ames for Odyssey of the Mind participants and coaches wearing their wristbands. CyRide will be operating during the following hours:

Tuesday, May 22	2:00 pm —10:00 p.m.
Wednesday, May 23	6:30 a.m.—Midnight
Thursday, May 24	6:30 a.m.—Midnight
Friday, May 25	6:30 a.m.—Midnight
Saturday, May 26	6:30 a.m.—Midnight
Sunday, May 27	4:00 a.m.—Noon





Things To Do at World Finals

IOWA STATE UNIVERSITY RECREATION FACILITIES

Team members must provide the attached medical release form to register and participate in any recreational activities. Towels, racquets, basketballs, etc. may be checked out at the recreation centers. Campus recreation activities include the following:

- Swimming
- Volleyball
- Ping Pong
- Billiards
- Basketball
- Foosball
- Bowling
- Rock Wall Climbing*

*Requires parental release form at time of climb/see page 13

FURMAN AQUATIC CENTER

Just a quick bus ride from campus, and three blocks from Frederiksen Court, the Furman Aquatic Center includes a 550 foot lazy river with a waterfall and two tremendous water slides both more than 200 feet in length. There is also a 50 meter pool that boasts another huge 150 foot drop slide, basketball hoops, floatables, 3 meter platform, 1 meter spring board and multiple lanes to accommodate both recreational and competitive swimmers alike. When planning for the day in the sun:

1. Pack a towel so that you have one for either our indoor or outdoor pool options.
2. Remember to bring sunscreen.
2. Children (12 and under) must pass a deep water test before entering the 13 foot area (diving boards / drop slide) or five foot area (lap swim area).

CREATIVITY FESTIVAL

Visit Lied Rec Center and have fun at the Creativity Festival. There is a wide variety of interactive booths, entertainment, OMER's pins, creative challenges and more! Don't forget to stop by the Odyssey Angels booth, and meet the 2018 Odyssey Angels! The festival runs Thursday-Saturday, and is a great place to meet and make new friends!



OUTDOOR RECREATION PROGRAMS - CLIMBING WALL
OFFICE OF RECREATION SERVICES
IOWA STATE UNIVERSITY

RELEASE, ASSUMPTION OF RISK, WAIVER OF LIABILITY AND HOLD HARMLESS AGREEMENT

PLEASE READ THIS CAREFULLY - IT IS A BINDING LEGAL DOCUMENT!

Acknowledgment of Risk - CLIMBING WALL:

I HEREBY ACKNOWLEDGE and agree that the sport of rock climbing and the use of the Climbing Wall located in the Lied Recreation Athletic Facility, Iowa State University (hereinafter referred to as the CLIMBING WALL) has inherent risks. I have full knowledge of the nature and extent of all the risks associated with rock climbing and the use of the Climbing Wall, including, but not limited to:

- 1. All manner of injury resulting from falling off the Climbing Wall and impacting against rock faces and projections, whether permanently or temporarily in place, or the Climbing Wall floor;
2. Rope abrasion, entanglement and other injuries resulting from activities on or near the Climbing Wall such as, but not limited to climbing, belaying, rappelling, lowering on rope, rescue systems, and any other rope techniques;
3. Injuries resulting from falling climbers or dropped items, such as but not limited to ropes or climbing hardware;
4. Failure of climbing equipment such as ropes, slings, harnesses, climbing hardware, anchor points, or failure of any part of the Climbing Wall Structure.

I further acknowledge that the above list is not inclusive of all possible risks associated with the use of the Climbing Wall and that the above list in no way limits the extent or reach of this release and covenant not to sue. I understand that the inherent risks involved in a climbing wall activity cannot be eliminated.

Initial Date

LIABILITY RELEASE

In consideration of the named minor's use of the Climbing Wall, I, _____, the parent or guardian of _____, do hereby RELEASE, WAIVE, DISCHARGE AND COVENANT NOT TO SUE Iowa State University, the Outdoor Recreation Center and Programs, the Board of Regents of the State of Iowa, the State of Iowa, its officers, servants, agents, or employees, (hereinafter referred to as RELEASEES) for any liability, claim, and/or cause of action arising out of or related to any loss, damage, or injury, including death, that may be sustained by me, or to any property belonging to me.

In consideration of the named child's use of the CLIMBING WALL, I, the undersigned parent or guardian of the named child, agree to INDEMNIFY AND HOLD HARMLESS the RELEASEES whether injury or damages is caused by my negligence, the negligence of the RELEASEES or the negligence of any third party from any loss, liability, damage or costs, including court costs and attorneys' fees, that RELEASEES may incur due to my use of the CLIMBING WALL.

It is my express intent that this RELEASE and HOLD HARMLESS AGREEMENT shall bind the members of the child's family, heirs, assigns and personal representative and shall be deemed as a RELEASE, WAIVER, DISCHARGE and COVENANT NOT TO SUE the above-named RELEASEES.

I hereby further agree that this Participation Agreement, Release, Assumption of Risk, Waiver of Liability and Hold Harmless Agreement shall be construed in accordance with the laws of the State of Iowa.

If the named child deviates from any aspect of the planned climbing wall activity, such deviation is purely voluntary and the RELEASEES shall not be liable for any injuries resulting or arising out of such deviation.

I understand that by participating in the specified activity I will ASSUME THE RISK of injury and damage sustained by the named child from the risks and dangers that are inherent in use of the CLIMBING WALL.

I certify that the child's birth date is _____ and is _____ years of age. I further certify that the child is in good health and has no physical limitations that would preclude his/her safe use of the climbing wall. My child has been instructed in the safety rules for the ISU Climbing Wall and agrees to abide by them.

I further certify that I am the parent or guardian of the named child and that I am of lawful age (18 years or older) and otherwise legally competent to sign this agreement. IN SIGNING THIS RELEASE, I ACKNOWLEDGE AND REPRESENT that I have read the foregoing ACKNOWLEDGEMENT OF RISK- CLIMBING WALL AND LIABILITY RELEASE, understand it, and sign it voluntarily on behalf of the named child.

Participant Printed Name

Parent or Guardian Signature

Date



Telephones

Prior to leaving home, be sure to leave a list of all team members and chaperones and any cell phone numbers with family members. Distribute a list of cell phone numbers to all your team members. Note that the Ames area code is 515.

RESIDENCE HALLS

Telephones are not provided in residence housing rooms and apartments. Telephones are located near residence hall floor dens (lounges) and outside of residence halls and apartment buildings. Local calls are free, but long distance calls will require a calling card. If dialing a campus number from a lounge phone, use only the last 5 digits (e.g.: 4-xxxx.) If calling an off-campus number, dial 8 for an outside line.

CAMPUS INTERNET ACCESS

Campus has wireless internet access available to you across campus. All of residence housing has plug-in access to the Internet using the data jack in the guest bedroom, so be sure to bring an Ethernet cord if you are planning to plug in for non-wireless access. ISU has a service that allows campus visitors access to the Internet during their event to browse the web and check email. To set up guest access follow these steps:

1. Open a web browser.
2. Enter "netreg.iastate.edu" into the address bar and press Enter if the ISU NetReg page does not automatically appear.
3. Select Odyssey of the Mind World Finals 2018, and click "Register Here."
4. Enter your local contact information and select "Next."
5. Read the terms and select "I Agree."
6. Reboot your computer when instructed to do so (approximately a one-minute wait) to complete your registration process.

Questions regarding registration for guest access may be directed to the IT Services Solution Center at 515.294.4000.

IF YOU HAVE QUESTIONS

If you need general information **prior to arrival**, please go to www.ThinkAmes.com. If you need information that is not available on our website, please call 515.232.4032 to leave a voice message including your name, number and inquiry and someone will return your call as soon as possible. For information **after arriving on campus**, stop by the local information desk at Registration or at the Memorial Union. After hours, stay up to date using the OMER'S World app, or stop by the 24 -hour desks where you are staying.

IN CASE OF AN EMERGENCY

In the event of an emergency at home, the number for family members to call is the ISU Police at 515.294.4428. They will assist in locating the participant.





Health Services

Attached is the medical release form that is required for every participant and must be signed by his or her parent/guardian in order to register. In order to seek care away from home, you must have your release/insurance information with you. These are required to be brought with you to campus, and shown at registration. Please bring two sets of your team's completed forms with you. One set to be kept with the coach, and one with the individual in case the group is separated when needs for services arise.

THIELEN STUDENT HEALTH CENTER

The Thielen Student Health Center is located on the corner of Union Drive and Sheldon (west edge of campus, directly west of Beyer Hall, across the street from State Gym). The phone number is 515.294.5801. First aid and minor illness care is included in your fees. If the incident requires further diagnostic work, associated fees will be billed to the participant or their insurance company. For minors seeking care, you must have medical release/insurance information with you. If prescription medications are ordered, they may be filled at the health center pharmacy, if open, or at a local commercial pharmacy. The pharmacy will bill your pharmacy benefit plan if you provide them with that information. The Thielen Student Health Center is open during the following hours:

- Tuesday through Friday: 8:00 a.m.—5:00 p.m.
- Saturday: 8:00 a.m.—2:00 p.m.

MCFARLAND URGENT CARE CLINIC

The McFarland Urgent Care Clinic provides care for acute, non-emergent health problems or injuries that require immediate attention. The urgent Care Clinic is available during evenings and weekends by appointment only. You do not have to be an established McFarland Clinic patient to be served in the Urgent Care Clinic. To schedule your same-day appointment at the McFarland Urgent Care Clinic, please call 515.956.4044. The Urgent Care Clinic is located in the Family Medicine East location at 1018 Duff Avenue and is open during the following hours:

- Tuesday through Friday: 9:00 a.m.—7:00 p.m.
- Saturday and Sunday: 9:00 a.m.—5:00 p.m.

MCFARLAND EXPRESS CARE

McFarland Clinic offers same day and next day appointments for common illnesses, and is available inside both Hy-Vee locations in Ames, offering services from 9 am to 5pm 7 days a week.

EMERGENCY CARE –HOSPITAL

Medical care also is available through the emergency room of Mary Greeley Medical Center, located at 12th Street and Duff Avenue.

FIRST NURSE PHONE LINE

First Nurse is a free health-information community service that allows you to speak with a specially trained registered nurse and receive health information and expert advice on medical problems. Their services can help you determine whether or not to see a physician or visit an emergency room. The First Nurse phone line is staffed by nurses with background in a variety of medical specialties, and is available 24 hours a day, 7 days a week and can be reached by phone at 515.239.6877 or toll-free at 800.524.6877.



Odyssey of the Mind 2018 World Finals

Medical Information/Release Form

Participant Information

Last Name _____ First Name _____
Permanent Address _____ Date of Birth _____
Sex _____ City, State, Zip _____ Home Phone () _____

Event Information

Event Name and Description:

Event Dates (start and end dates):

Medical Emergency Contact Information

Person to Contact First:	Back-up Contact (Friend or Relative):
Name _____	Name _____
Relation to Participant _____	Relation to Participant _____
Daytime Phone () _____	Daytime Phone () _____
Evening Phone () _____	Evening Phone () _____

Are you allergic to any medications? _____

List current prescriptions/medications: _____

Are you currently under a doctor's care? Please explain. _____

INSURANCE POLICY INFORMATION

___ Yes ___ No The above-named participant is covered by health insurance.

(If yes, provide the following information, which is required by Iowa State University to expedite treatment and to facilitate the billing process.)

Policy Holder's (PH) Name _____ PH's Date of Birth _____
Address _____ Relation to Participant _____
City, State, Zip _____ Occupation _____
PH's Employers Name _____
Employer Address _____
Insurance Company Name _____
Insurance Company Address _____
Policy # _____ Plan # _____

PARENTAL PERMISSION

I give my permission for such diagnostic and therapeutic procedures as may be deemed necessary for my son/daughter by the Iowa State University Student Health Center or any other medical facility. I understand that any health care facility will make every reasonable effort to contact me first, time and conditions permitting.

Name (Please Print) _____ Signature _____
Relationship _____ Date _____



Shipping Your Props

PREPARING TO SHIP YOUR PROPS

Pack props in cases, crates or cartons. All cartons that are shipped must fit through a standard doorway of 32” wide x 72” tall and must be less than 8’ long. Fill out the enclosed shipping label completely and attach the label securely to EACH case or carton. Copy the shipping label as necessary. **DO NOT PUT PROPS MADE FOR MORE THAN ONE PROBLEM IN THE SAME CASE OR CARTON.** If you are shipping more than one piece, mark each piece “Box 1 of 2, Box 2 of 2” and so on, clearly labeled with the enclosed shipping label affixed. Complete all information on the label. All materials shipped must be clearly marked with the team’s membership name and number, address, daytime phone number, problem name, division and shipped to the address provided on the shipping label. Props will be accepted beginning May 1, 2018. Ship early to have packages arrive by May 18th.

ONCE YOUR PROPS ARE SHIPPED—BEFORE YOU ARRIVE

After May 2, you can check ISU’s Central Receiving Web Site to see if your shipment has been received. The Web site address is <http://isu.sclintra.com/OTM>. When props arrive, cartons will be grouped according to problem and delivered to a storage area near the competition site. Any oversize carton (larger than 32” wide x 72” tall x 8’ long) received will be kept at the central receiving location and teams will be responsible for moving it to the competition site. **DON’T FORGET YOUR TOOLS TO OPEN YOUR PROP CRATES AND TO REASSEMBLE YOUR PROPS!**

WHILE YOU ARE HERE

Prop Information will be available during registration at Stephens Auditorium. On Thursday and Friday, a prop information table will be at the Memorial Union. Should your shipment not be in the designated storage area, inquire at either of these sites, or call 515-290-7189.

UNLOADING AT COMPETITION SITES

For props that travel with you, participants must load and unload their own props. Special needs? Please call 515.290.7189 for assistance.

PROP RETURN SHIPMENTS

You will need to pre-arrange for PREPAID or C.O.D. shipment of any materials that you want shipped back to you. Return shipping labels must be picked up in advance at the Prop Information desk. All returns must be processed through the Prop Information desk. All return goods must have a return label attached. ISU will not be responsible for returns left without proper paperwork. For questions, contact Jared Hohanshelt at 515.290.7189.

A colored return label to apply to the carton (s) must be obtained from the Prop Information booth at Stephens Auditorium/Memorial Union to identify cartons to be picked up for return shipment. Teams who wish to ship materials home must arrange for prepaid or COD shipment with the truck firm of their choice. Your truck firm will pick up at:

Iowa State University
Central Receiving Facility
925 Airport Road
Ames, IA 50010

Iowa State University and Odyssey of the Mind will not be responsible for overages or shortages of payment and/or damage to return shipments.



The DEADLINE for material to be picked up for return to Central Stores is NOON, SATURDAY, MAY 26, 2018.

ODYSSEY OF THE MIND WORLD FINALS 2018

SHIP TO:

Iowa State University
925 Airport Road
Ames, Iowa 50010



CARTON _____ OF _____

Attention: Todd Wilson

Phone: (515) 294-1804

Membership Name (School): _____

Membership Number: _____

Address: _____

City _____ State _____

Coach: _____

Phone Number: _____ Email _____



PROBLEM 1 : Triathlon Travels	
PROBLEM 2 : Emoji, Speak for Yourself	
PROBLEM 3 : Classics... Mockumentary! Seriously?	
PROBLEM 4 : Animal House	
PROBLEM 5 : A Stellar Hangout	



DIVISION I	
DIVISION II	
DIVISION III	
DIVISION IV	

*****Please make duplicate copies of this label and attach to all items being shipped*****

REMEMBER: Include only items for one problem and division in each package!

SHIPMENTS WILL BE ACCEPTED MAY 1-18, 2018



Checklists

BEFORE YOUR TEAM LEAVES HOME

- Have each team member fill out a medical release form and have it signed by a parent/guardian.
- Ship props between May 1 and May 18. Don't forget to attach the shipping label to each separate shipping item/package. Include only items for one problem and division in each package.
- Leave a list of all team members and chaperones' names and any cell phone numbers with family members.
- Pack clothes for recreational activities, such as a bathing suit and tennis shoes.
- Leave the emergency number with family members. In the event of an emergency at home, family members should call ISU Police at 515.294.4428.
- Check on your props—go to <http://isu.sclintra.com/OTM>.
- Bring extra pillows if needed (you'll receive only one in residence housing) and universal plug-ins if coming from outside the U.S.

DOWNLOAD THE APP

—Omer's World—

FOR GREAT INFO ABOUT WORLD FINALS

ONCE YOU ARRIVE

- Check in at Iowa State Center, Stephens Auditorium.
- Check on your props with during check-in or at the prop information table at Registration, or on Thursday or Friday in the Memorial Union.
- Locate assigned residence area and dining center.
- Stop by the Info Desk in the Memorial Union if you need information after arriving on campus.
- After your arrival, have your team members give family members at home their location, room number and building name, and the 24-Hour Desk number for your assigned living area.
- Use the free shuttle to get around campus and Ames.
- Interested in Rock Wall Climbing? Release forms are taken at the time of use in the recreation center.

